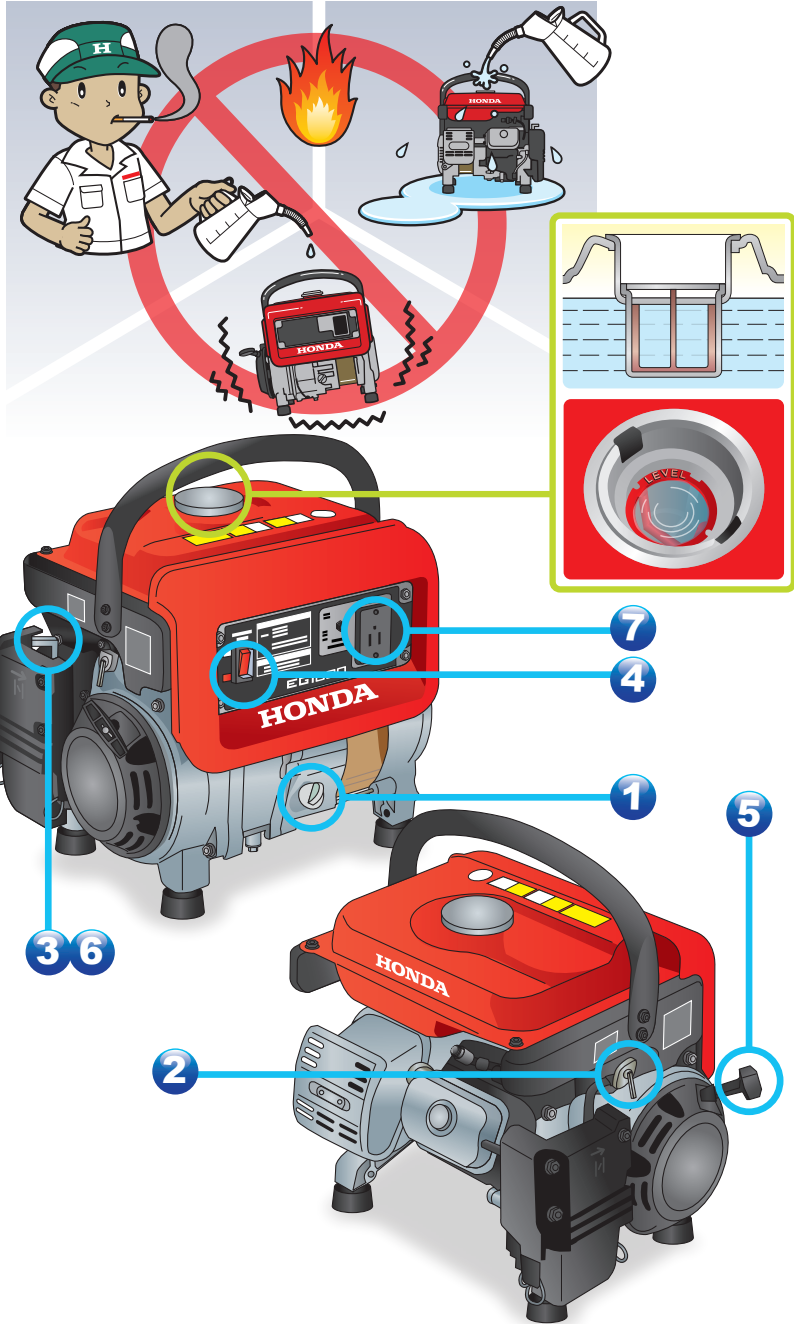


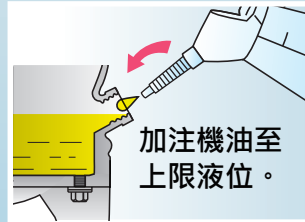


* 在操作發電機之前閱讀並理解使用說明書。

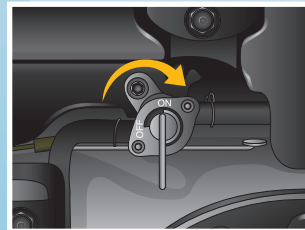


▶ 如何起動

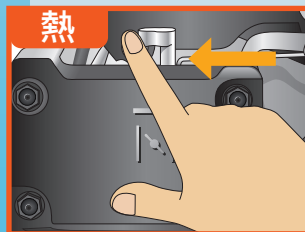
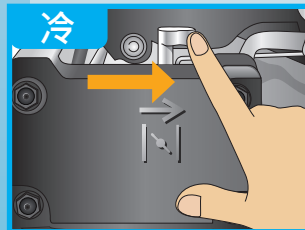
1 檢查引擎機油



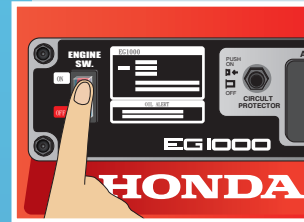
2 燃油栓閥開啟



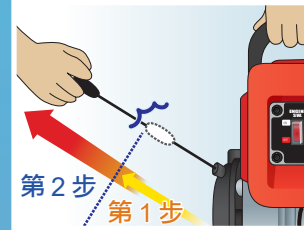
3 阻氣門開 / 關



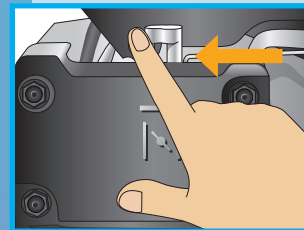
4 開啟電源



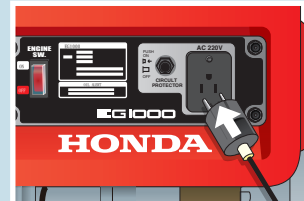
5 起動



6 (阻氣門關閉)



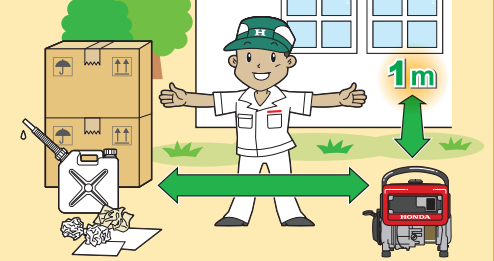
7 插接



▶ 如何熄火 7 → 4 → 2

安全！小心！

✓ 安全！小心！



✓ 不可在屋內使用



✓ 不可在潮濕的情況下使用



✓ 不可連接到家戶迴路

